



NEWS & VIEWS

Be The Best You Can Be

Headteacher: Mr I Smyrk

Traditional Values

Learning for the Future

Outstanding Personal Achievement



Headteacher's Comment

Good afternoon

This week we had the awards assembly for Year 11 students, although we were unable to have the full presentation evening due to COVID-19 restrictions it was great to be able to present them with their awards and congratulate them on their amazing achievements.

This week's News and Views is a trip special and I am pleased to say since the start of term we have been able to run the drama theatre and geography trips for Years 10 and 11. Thank you to the staff involved for organising these trips and to the students who took part.

Have a great weekend.



Drama Theatre Trip

LIVE THEATRE ONCE AGAIN!

We have been lucky enough to have already run two theatre trips since the start of term.

Year 10 and 11 GCSE drama students travelled to Wembley Park to see *The Curious Incident of the Dog in the Night-Time* at the Troubadour theatre on Wednesday 5th January. The production, adapted from the novel by Mark Haddon, contains moments of sensory intensity, reflecting the content of the novel and autistic experience of the protagonist, Christopher. This engaging production, with movement choreography by Frantic Assembly, will serve students in the Live Theatre Evaluation section of their written drama exam.

Year 9 had the opportunity to see *The Play that Goes Wrong* on Tuesday 11th January which is the debut production by Mischief Theatre Company; the team behind *The Goes Wrong Show* on BBC One. The group travelled to London to the Duchess Theatre and enjoyed to see this comic production which supports the practical work they have been doing in drama lessons. This term, they are exploring *A Comedy about Bank Robbery*, also by Mischief Theatre Company; applying the practical comedy skills built during the autumn term.



DISCOVERY
EDUCATIONAL TRUST

Executive Headteacher: Mr R Duff

St Martin's School is proud to be part of the Discovery Educational Trust



www.st-martins.essex.sch.uk



@StMartinsSch



enquiries@st-martins.essex.sch.uk



NEWS & VIEWS

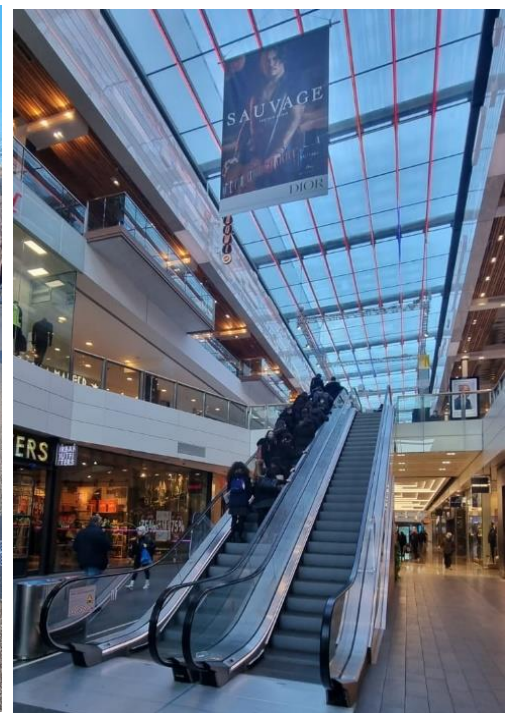
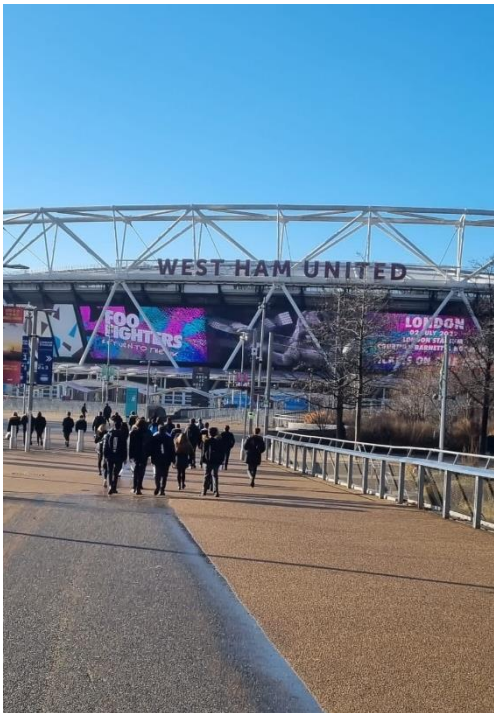
Be The Best You Can Be

Headteacher: Mr I Smyrk



GCSE Geography Fieldtrip to Stratford

On Wednesday 5th and 12th January, Year 10 geography students took a trip to Stratford to prepare for their GCSE Paper 3. Both days were nice and sunny but certainly very chilly! The GCSE students were investigating how the urban area has been regenerated by collecting data at three sites across Stratford. Students started at the Stratford Centre, before heading on to the Olympic Park and ending the day at the Westfield shopping centre. They collected data by completing environmental quality surveys, pedestrian counts, perception surveys and field sketches. Throughout the day, students also sampled the opinions of local people to understand how regeneration of the area has impacted them. The next stage of their fieldwork will be Walton on the Naze in the summer which, hopefully, will be much warmer!



DISCOVERY
EDUCATIONAL TRUST

Executive Headteacher: Mr R Duff

St Martin's School is proud to be part of the Discovery Educational Trust



www.st-martins.essex.sch.uk



@StMartinsSch



enquiries@st-martins.essex.sch.uk