

Why is it important to end gender discrimination?

Do Now:

1. On a new page, write the date and the title.
2. Can you explain the difference between **gender** and **sex**? Write down your thoughts. We will discuss this and review over the lesson.

I can...



Know what the correct terms are that relate to gender.



Explain the problems that are associated with misgendering.



Relate these issues to transphobia.



Explain why gender discrimination is as much a problem as other forms of discrimination.



Gender Identity Quiz – True or False

1. Gender is assigned at birth, depending on biological characteristics.
2. Trans is a term to describe someone's sexual orientation.
3. Being trans is a choice.
4. Some people identify as being more than one gender and move between them.
5. All trans people want to change their bodies.

1. Gender is assigned at birth, depending on biological characteristics.

True: However, some people do not feel that they identify with their biological gender. This links to the next question....

2. Trans is a term to describe someone's sexual orientation.

False: Trans is an umbrella term used to describe how someone may identify in terms of their **gender**.

3. Being trans is a choice.

False: It is not a choice. The gender that someone feels that they are inside does not always match their body and this is very real.

4. Some people identify as being more than one gender and move between them.

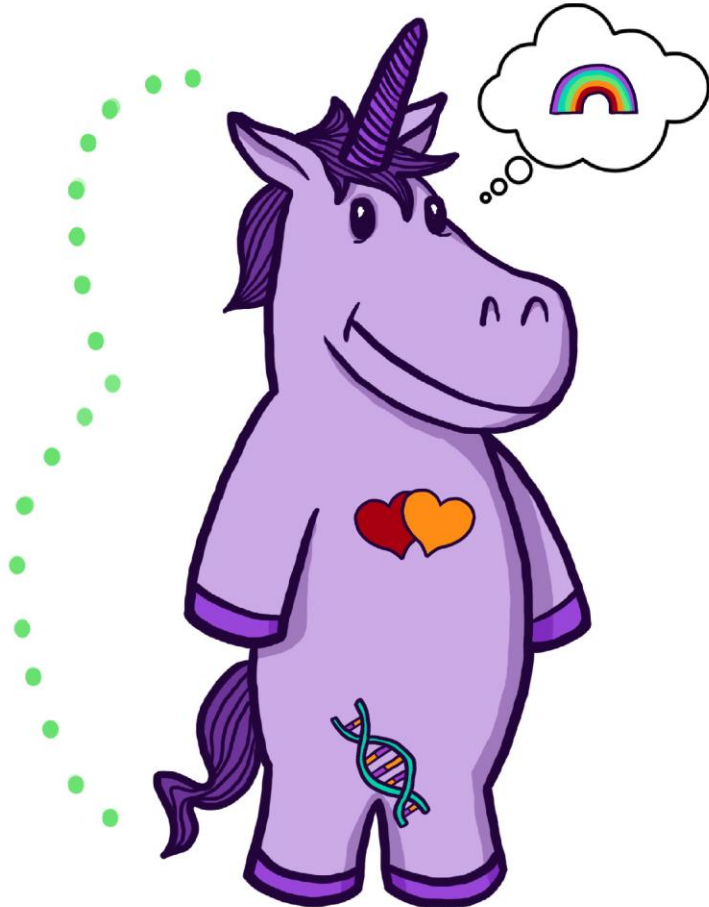
True: This is called being 'gender fluid'.

5. All trans people want to change their bodies.

False: Some trans people do go through extensive, and painful, surgery to change their bodies to reflect the gender in which they identify. However, many trans people choose not to do this and instead choose to present themselves in their identified gender in other, non-permanent ways, such as clothing, hairstyles, etc.

The Gender Unicorn

Graphic by:
TSER
Trans Student Educational Resources



Gender Identity

-  Female/Woman/Girl
-  Male/Man/Boy
-  Other Gender(s)

Gender Expression

-  Feminine
-  Masculine
-  Other

Sex Assigned at Birth

-  Female
-  Male
-  Other/Intersex

Physically Attracted to

-  Women
-  Men
-  Other Gender(s)

Emotionally Attracted to

-  Women
-  Men
-  Other Gender(s)

To learn more, go to:
www.transstudent.org/gender

Design by Landyn Pan and Anna Moore

Key Terms

Write down the following words – you will define them as we watch the video

Gender Identity:

Gender Expression:

Misgendered:

<https://www.youtube.com/watch?v=xCMmZUu07IQ>

Video Task

1. Watch the following video and write down 5 facts about **non-binary**.

<https://www.youtube.com/watch?v=kVe8wpmHIU>

2. Watch the following video and explain what **gender dysphoria** is.

<https://www.youtube.com/watch?v=rgrSSlqUukA>

Note that the experiences in this video belong to a trans man, but in most cases the non-physical dysphorias would apply to being non-binary and gender fluid people.

3. Watch the following video and explain why using the correct **pronouns** matters.

<https://www.youtube.com/watch?v=9iKHjl5xAaA>

Reflection

1. Why is it a problem to misgender someone?
2. Why is transphobia dangerous?
3. What can **we** all do to help end gender-based discrimination?

<https://www.youtube.com/watch?v=a6GcSn5H20w>

Warning – graphic language that describes transphobic experiences people have had.

Gender-based discrimination is not tolerated in society and is punishable by the law.

It is not tolerated at St Martin's and will be sanctioned appropriately – just like other forms of discrimination.