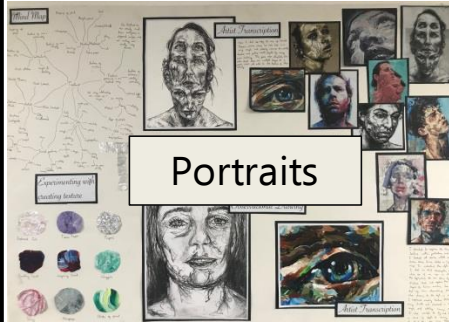


GCSE Art - Coursework overview

BOARD 1: Initial Ideas

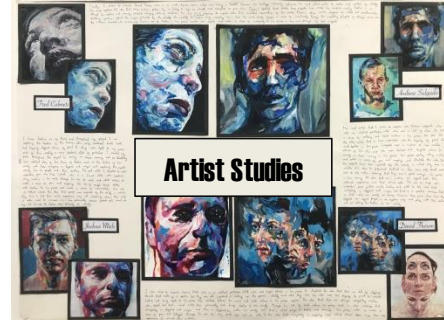
- Title
- Mind-map
- Collage
- 4-5x A4 size 2nd hand studies of internet images
- Annotation & key words



BOARD 2: Artists

Find and copy 4-5 artists that link to your theme:

- 4-5x artist copies
- Artist print outs
- Artist names
- Analysis



BOARD 3: Photos & Edits

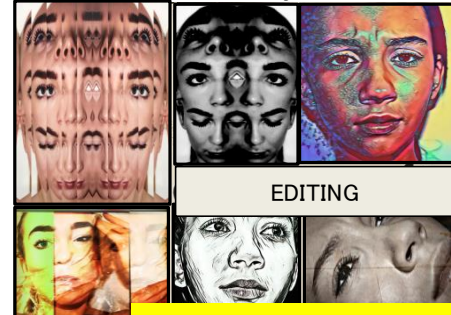
Take photos that link to your theme. Use your artist images to help you with composition and style:

- Contact sheet 25-35 images
- Enlarge 8 best images
- Annotation & key words



Use adobe photoshop or PicsArt to edit your photos in different ways:

- Approx. 6 x A5/A4/A3 printed edits
- Annotation & key words

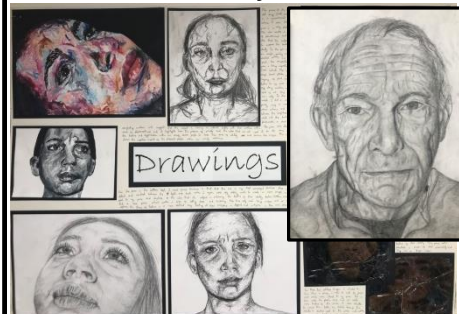


Yr10 PPE - 5 Hours

BOARD 4: Observations

Work from your photos, create 4x A4/A3 observations. Choose from:

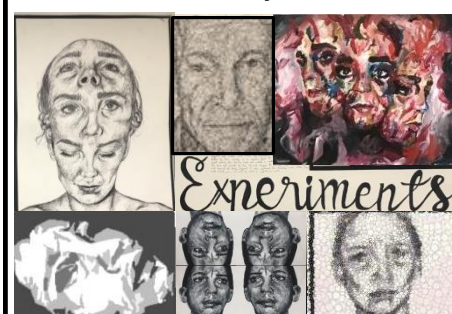
- Shading pencil, coloured pencil, watercolour, acrylic, biro, mono print, lino print, cello tape transfer, collage
- Annotation & key words



BOARD 6: Experiments

Work from your photos, create 5x A4/A3 experiments. Choose from:

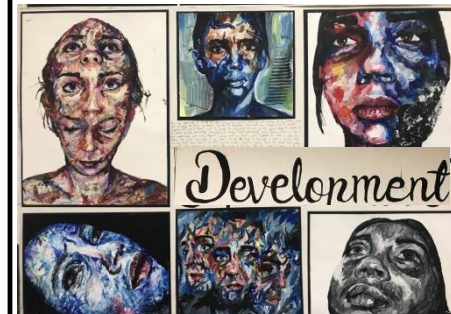
- Continuous line, pointillism, layering, overlapping, textured surfaces, coloured paper backgrounds, ink, mixed media
- Annotation & key words



BOARD 7: Developments

Using your photos, create 5x A4/A3 pieces of artwork that link to the style of your artists:

- 4-5x pieces of work
- Annotation & key words



BOARD 8: Final Designs

Create 2-3 final ideas that link to your artists:

- New photos
- Final idea 1 A3 size
- Final idea 2 A3 size
- Annotation & key words



Final Piece:
10 hr PPE